

シリア国内避難民と住民の国際関係認識

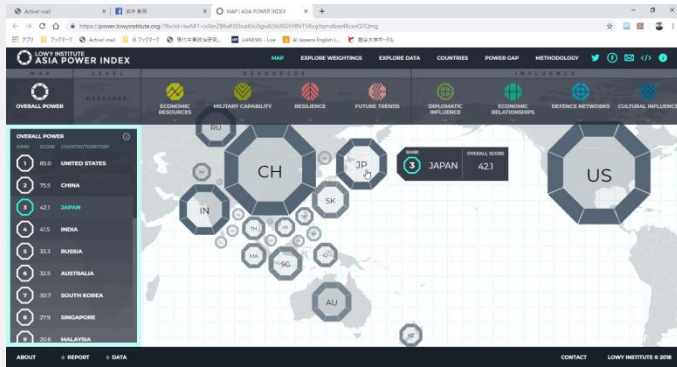
The Recognition in International Relations of Syrian IDPs and citizens

浜中 新吾 (龍谷大学法学部教授)

Shingo HAMANAKA, Ph.D.

**Professor of Middle East Politics, Ryukoku University,
Kyoto**

Research Question



- How to describe the political order in the Middle East from the viewpoint of Syria?
- How to grasp the image of foreign involvement in the Syrian Conflict?

Research Method

- We need a visualization method to evaluate how much contribution of each country to the world order.
- **Aoyama and Hamanaka** developed such a method ten years ago and have made a contribution to develop a new approach in IR studies empirically and theoretically.
- This is **the Political Mental Map!!**

What can we do?

- We inquire the salient features of recognition in the international relations of Syrian IDPs and citizens in **the method of the comparative political mental maps**.
- We also study the correlation between a factor of the political mental map and a political ideology **by regression analysis** in order to make the cognitive structure of the IDPs clear.

The distribution of power: Aoyama(2017)

- The First Camp
 - US, Europe, KSA, Qatar, Turkey
 - They support dissidents on the ground of the protection of human rights.
 - Responsibility to Protect (R2P)

The distribution of power: Aoyama(2017)

- The Second Camp
 - Russia, Iran, China
 - They support the Asad regime on the ground of respect for national sovereignty.

Strategic Perspective of the U.S.

- Three main sets of **challengers—the revisionist powers of China and Russia, the rogue states of Iran** and North Korea, and transnational threat organization... are actively competing against the United States and our allies and partners. (National Security Strategy 2017: 25.)
- ...the United States can promote stability and a balance of power and favor the U.S. interests (in the Middle East). (National Security Strategy 2017: 49.)

Strategic Perspective of Russia

Стратегия национальной безопасности Российской Федерации

- In international relations, **the role of the force factor** is not reduced. (section 14)
- **Ensuring national interests** is promoted by an active foreign policy of the Russian Federation aimed at **creating a stable and stable system** of international relations based on ... the principles of equal rights ... as the central element of such a system of international relations. (section 87)
- The process of formation of **a new polycentric model of the world order** is accompanied by an increase in global and regional instability. (section 13)

How to draw the political mental map

- A factor analysis of the response to following questions
- Q7: To what extent do you believe that the following countries or organizations will contribute to the improvement of living condition?
- Q8: ... to the rehabilitation of internally displaced persons
- Q9: ... working within Syria during the crisis have supplied the citizens' necessities?
- Q10: ... to invest in Syria?
- Q13: ... to participate in the reconstruction of Syria?

Figure 1: Evaluation of each state to stability in Syria

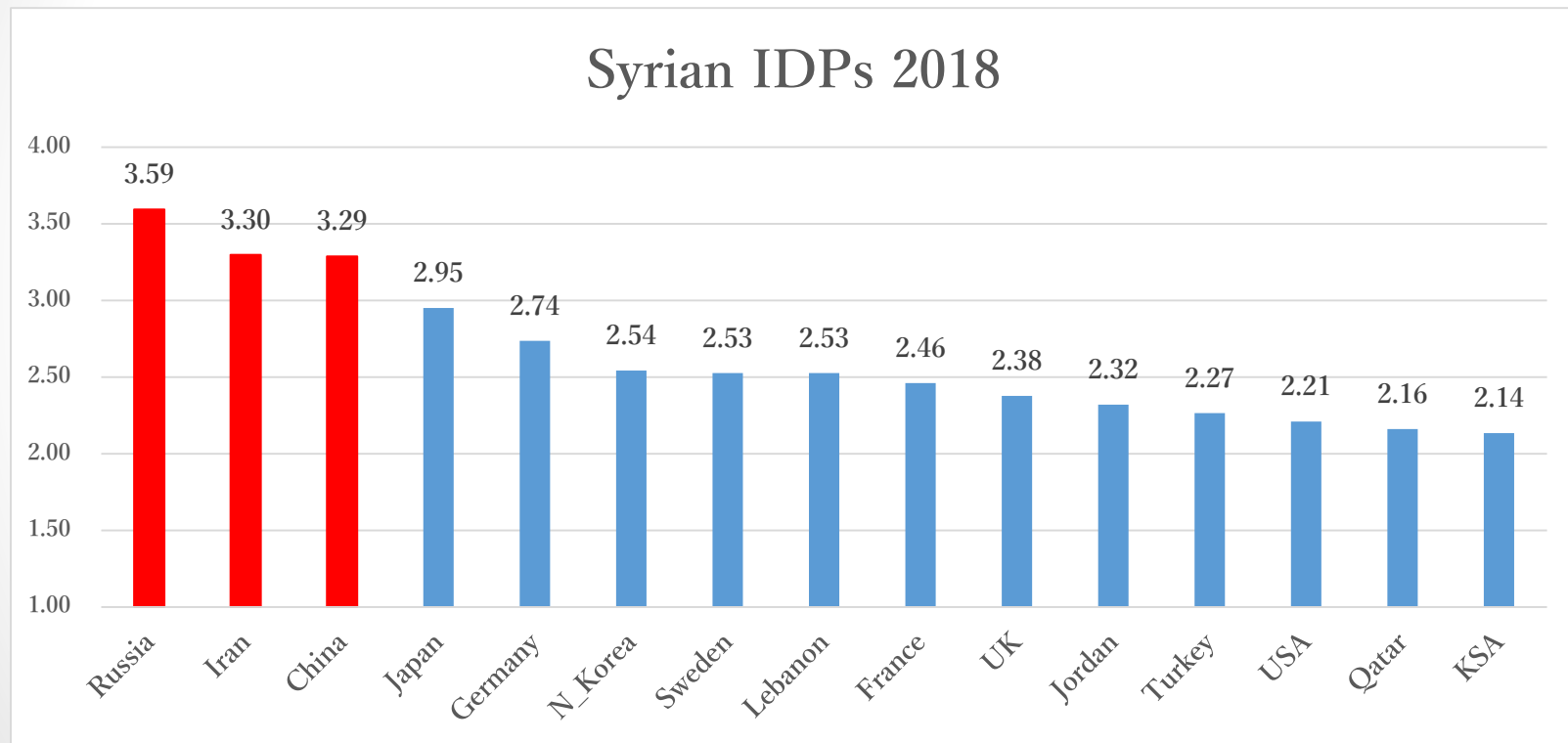


Figure 2: The Political Mental Map of IDPs 2018

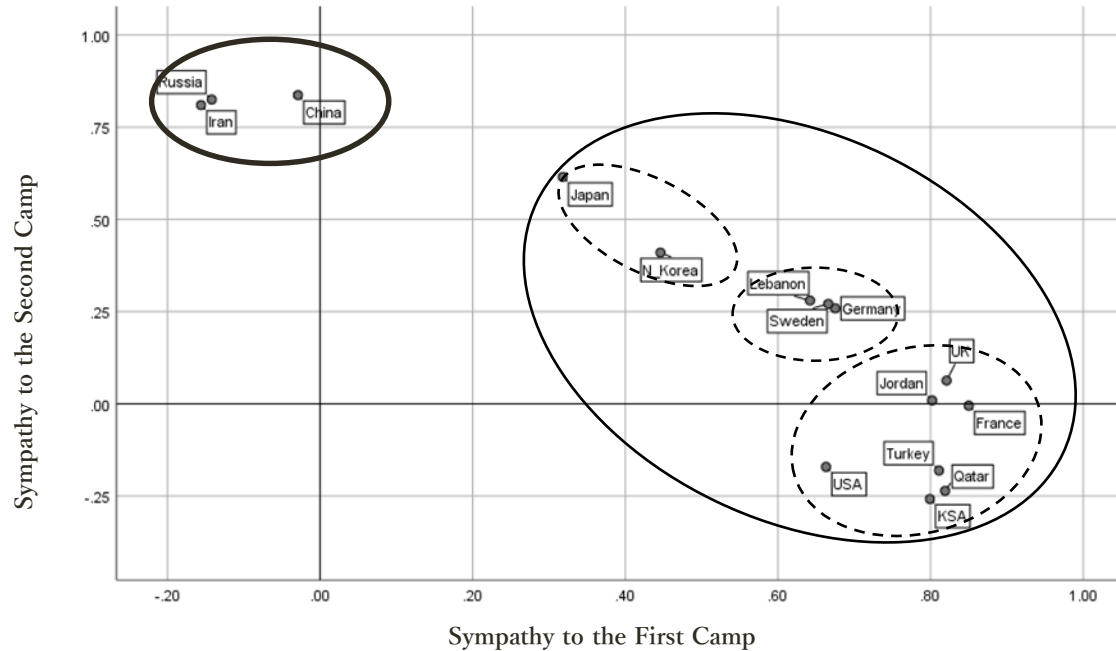


Figure 3: Evaluation of each country to system stability

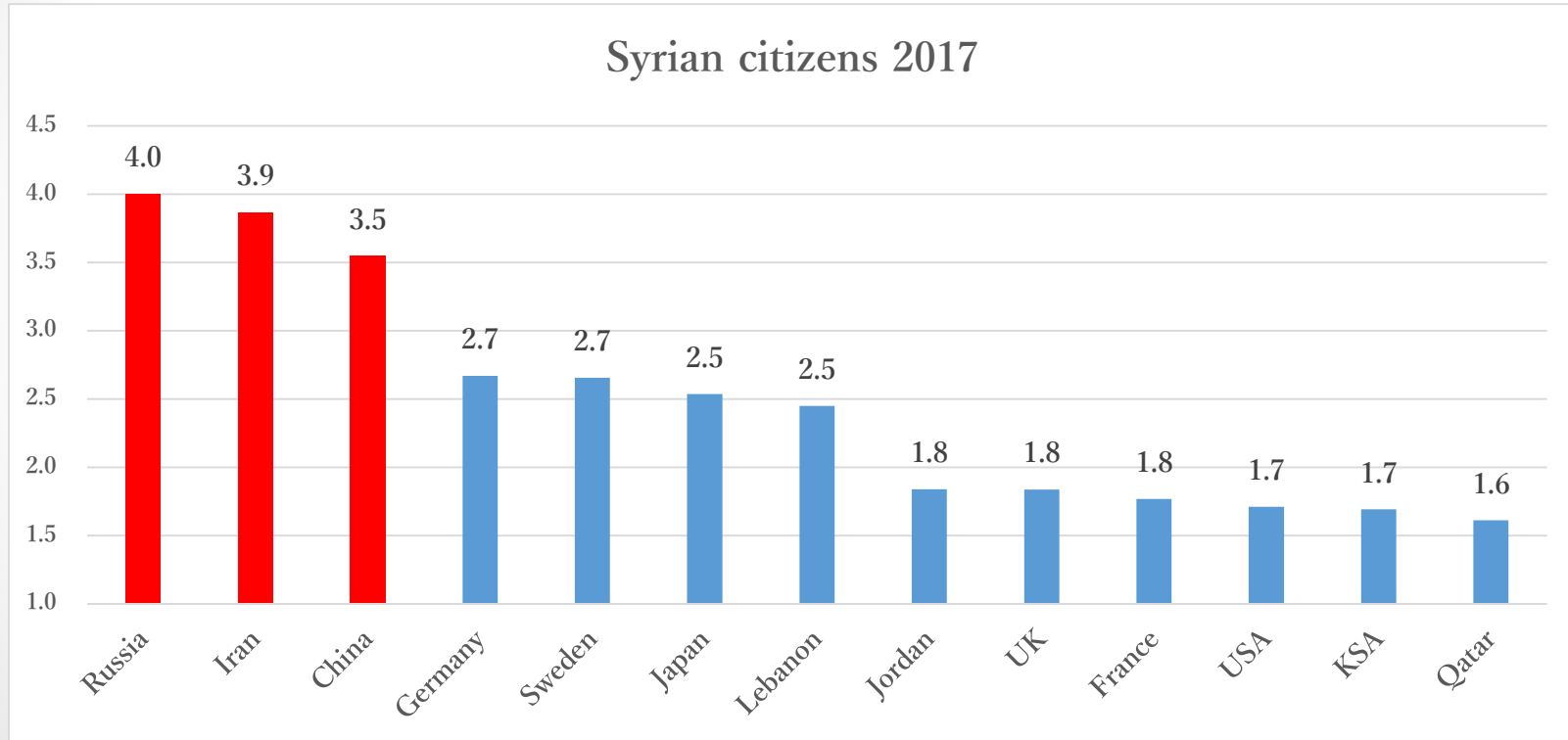
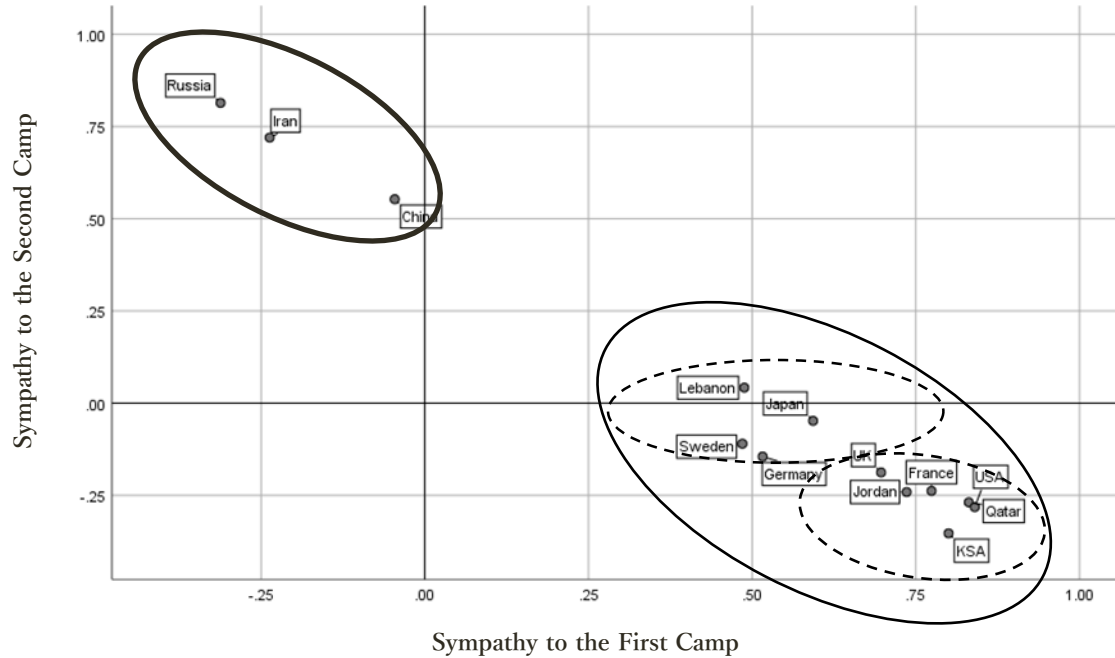
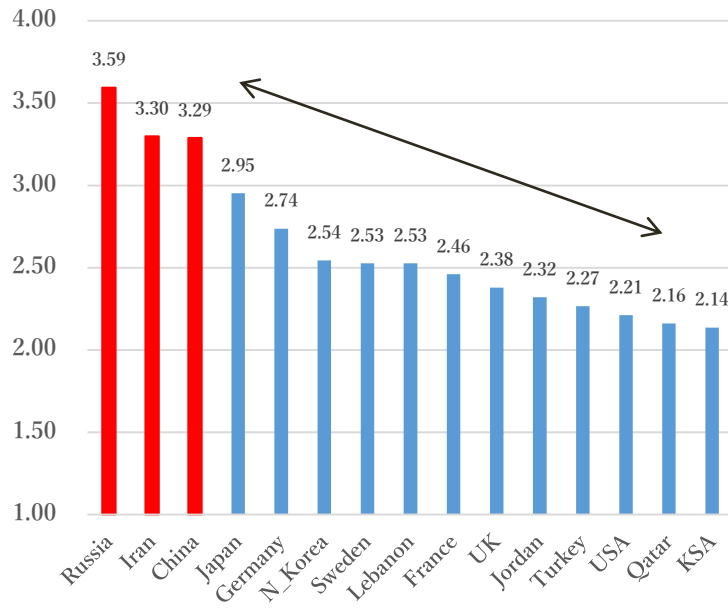


Figure 4: The Political Mental Map of Syrian Citizens 2017

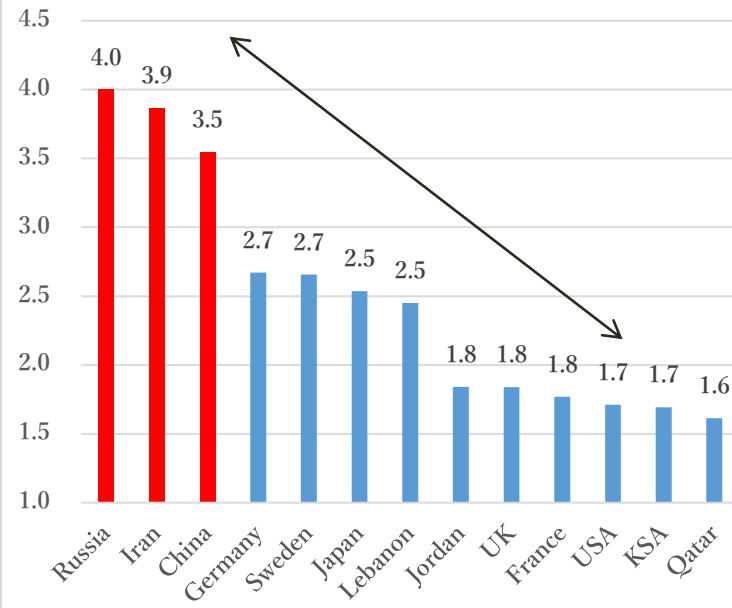


Comparison: similarity and difference

Syrian IDPs 2018



Syrian citizens 2017



Comparison: similarity and difference

Figure 2: The Political Mental Map of IDPs 2018

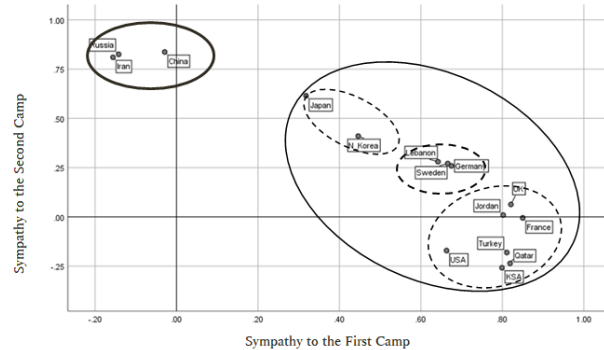
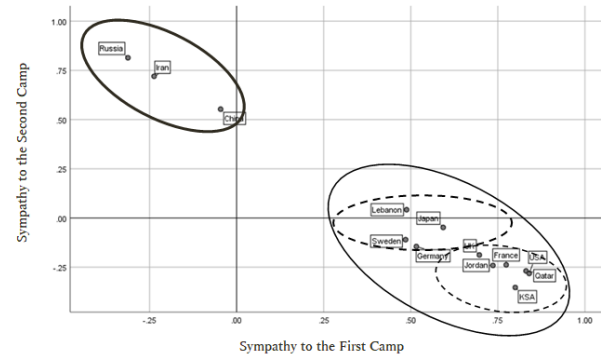


Figure 4: The Political Mental Map of Syrian Citizens 2017



Comparison

- The order of countries in IDPs is similar with it in Syrian citizens.
- $\Rightarrow \Rightarrow$ Both have similar image of the world order
- The variance of evaluations in IDPs is smaller than that in Syrian citizens.
- $\Rightarrow \Rightarrow$ IDPs expect international assistance from not only the second camp but also the first camp.

Regression Analysis 1: DV-sympathy to 1st camp

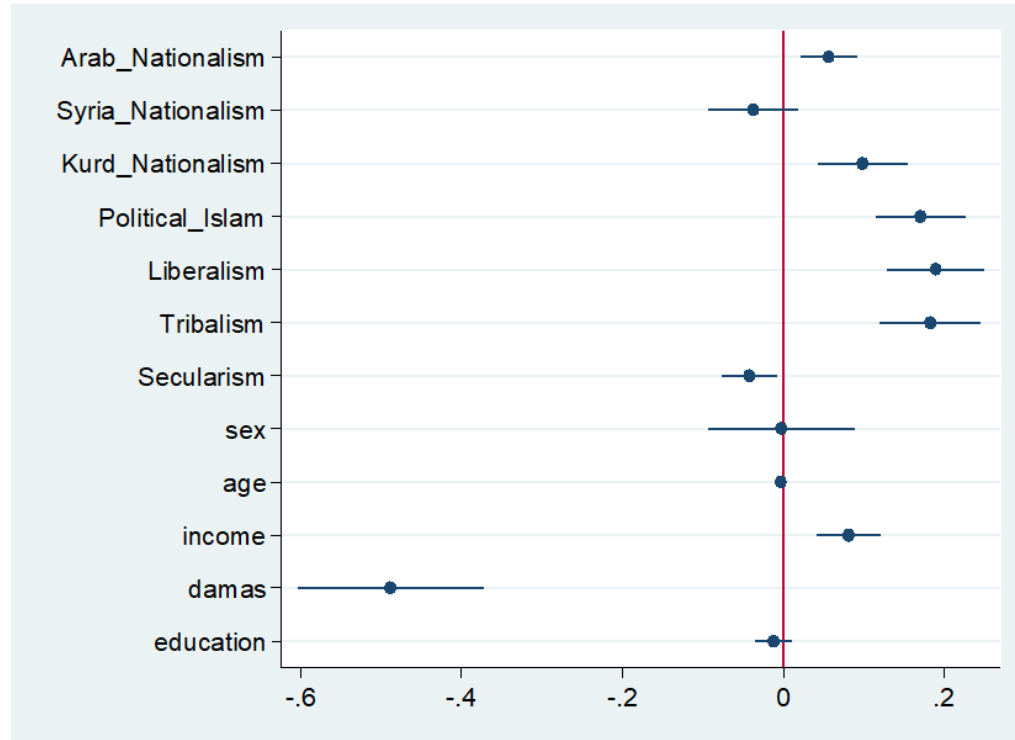


Figure 5: Result of regression on the first factor

Why Political Islam has a positive marginal effect?

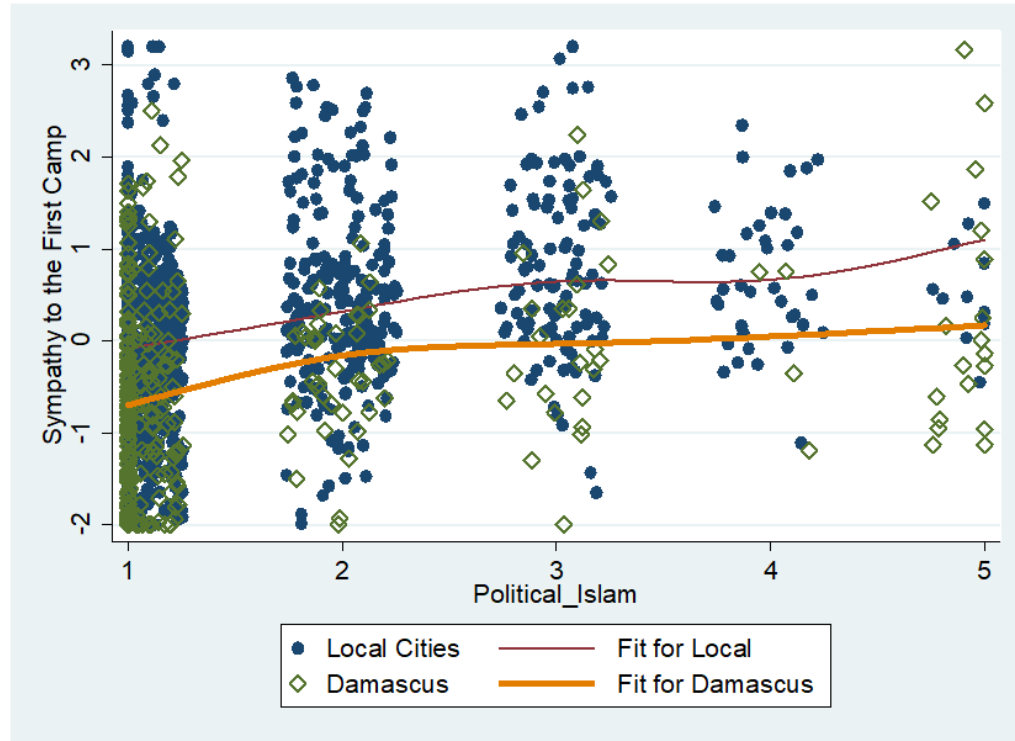


Figure 6: Marginal Effect of Political Islam on the first factor

Secularism has a negative marginal effect

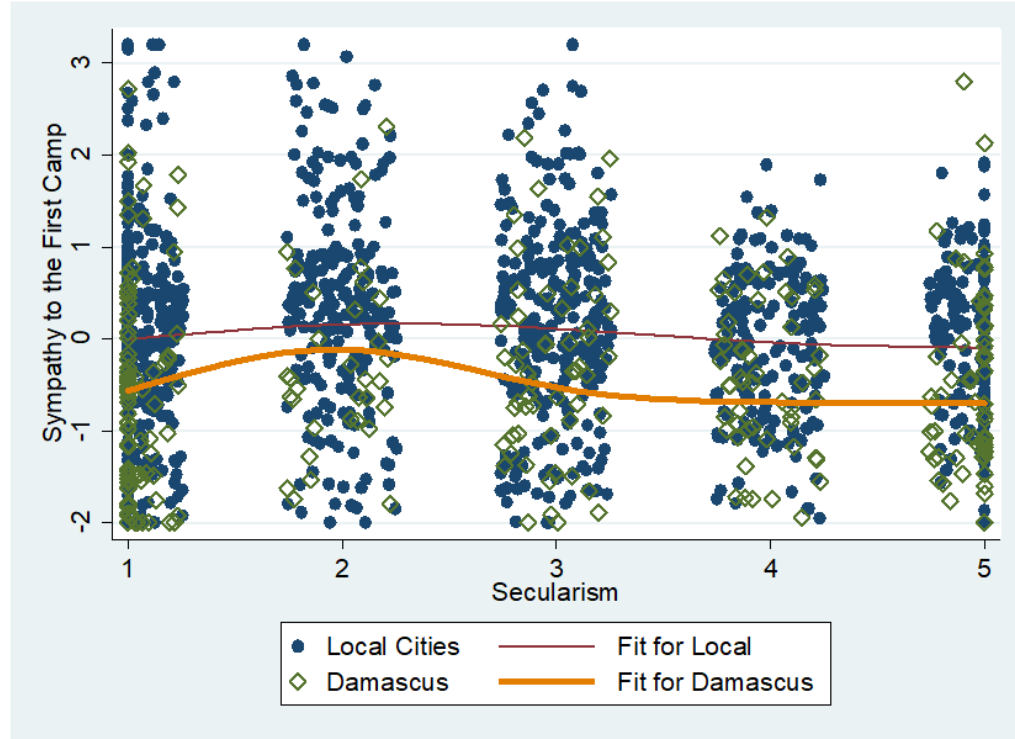


Figure 7: Marginal Effect of Secularism on the first factor

Regression Analysis 2: DV-sympathy to 2nd camp

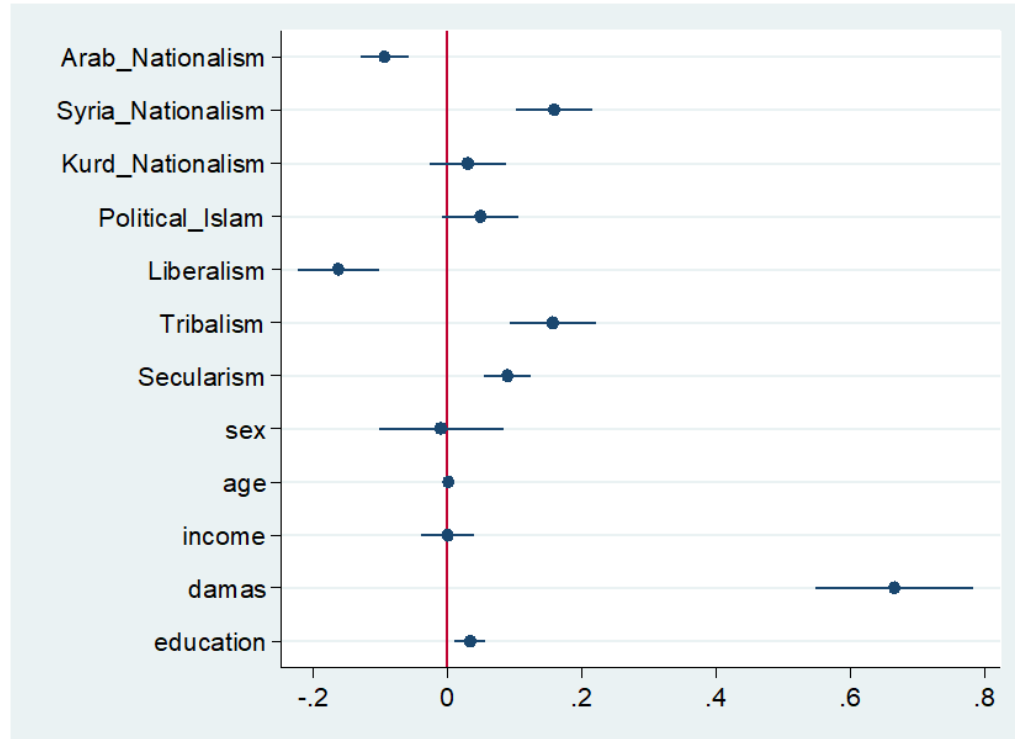


Figure 8: Result of regression on the second factor

Syrian nationalism has a positive marginal effect

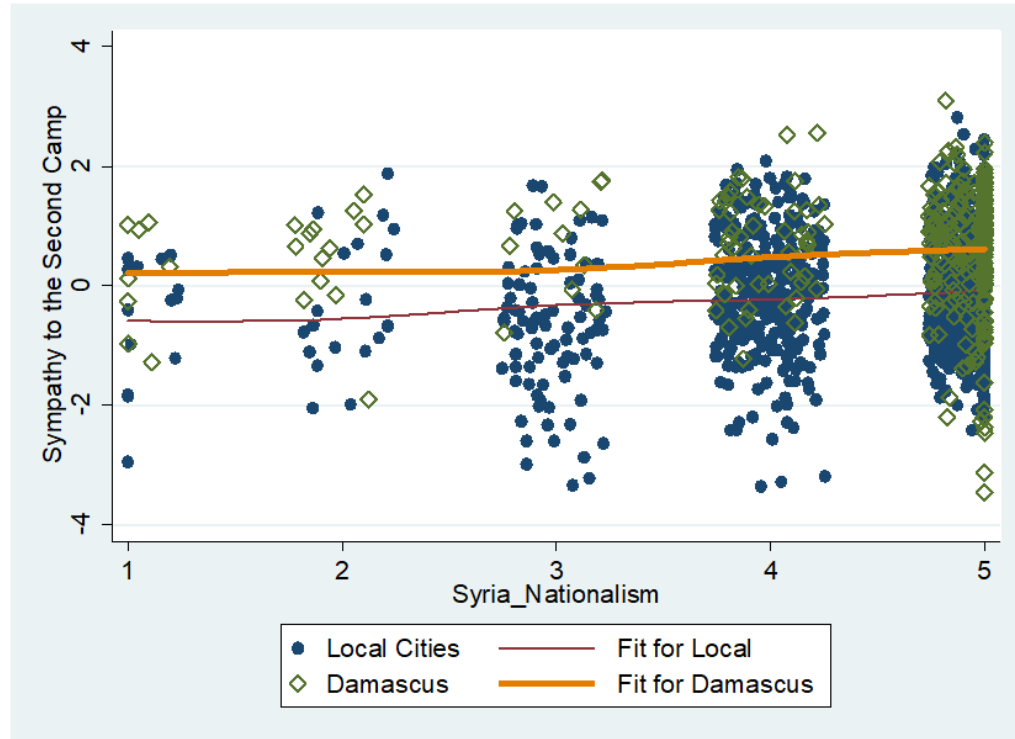


Figure 9: Marginal Effect of Syrian Nationalism on the second factor

Liberalism has a negative marginal effect

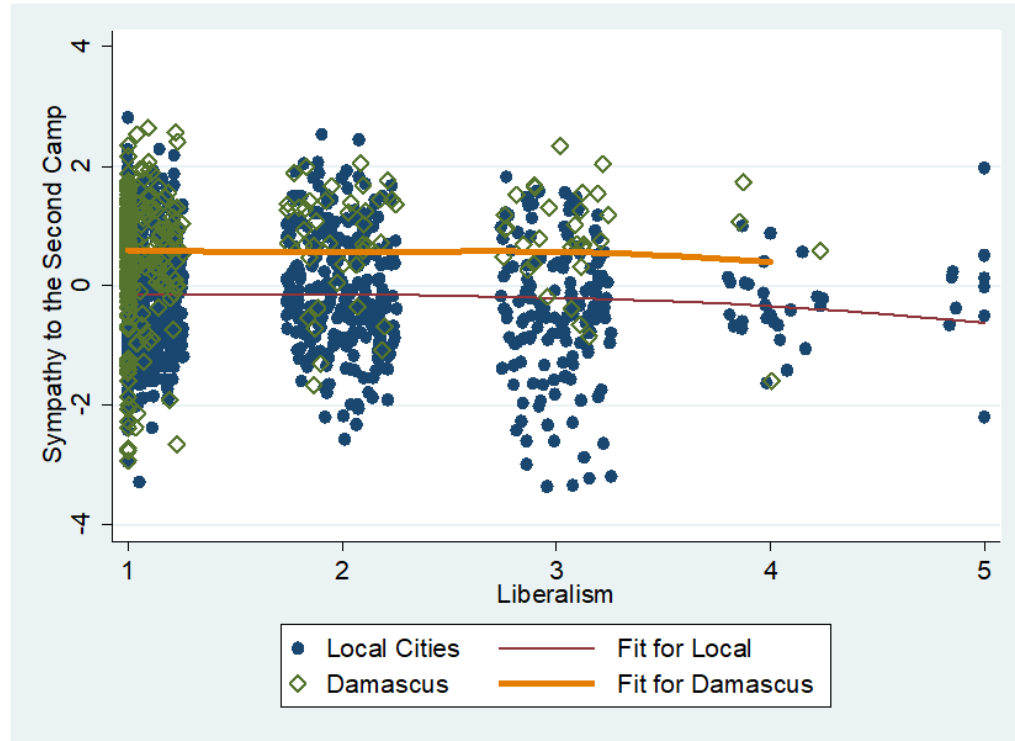
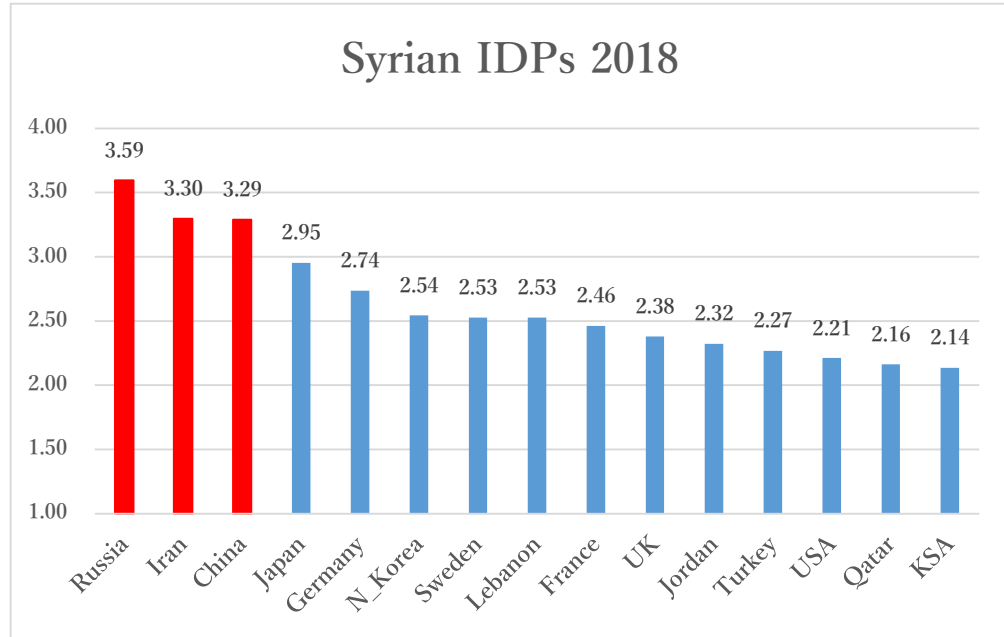


Figure 10: Marginal Effect of Liberalism on the second factor

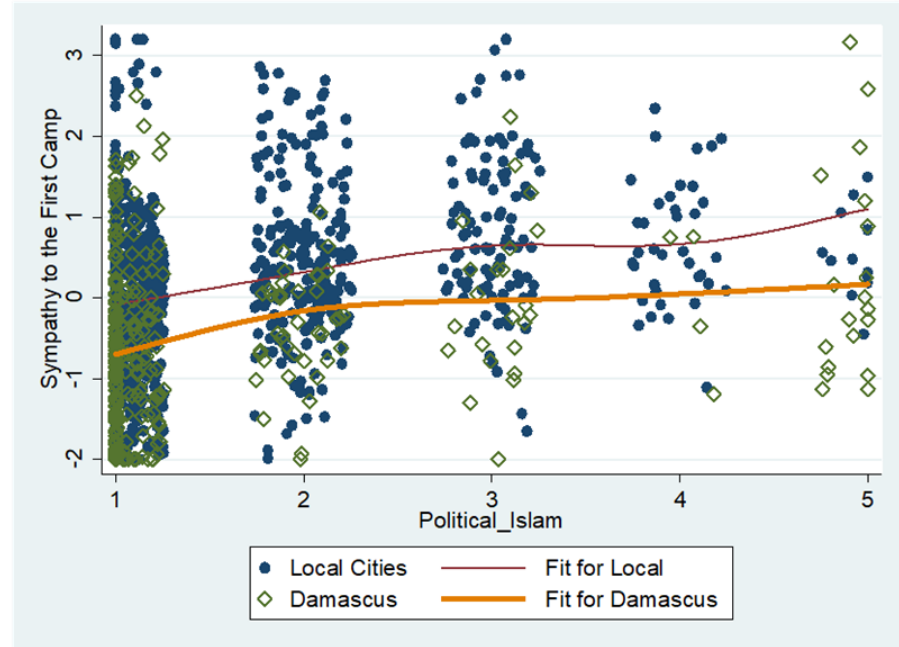
Conclusion

- Both IDPs and Syrian citizens do **not** evaluate the behavioral principle of the first camp; R2P.
- They regard the behavior of the first camp as power projection.



Conclusion

- Correlation between sympathy to the 1st camp and Political Islam $\Rightarrow \Rightarrow \Rightarrow$ because Turkey, Qatar, and KSA support Islamist dissidents. **The world order is partly explained by Islamist ideologies.**



Conclusion

- Correlation between sympathy to the 2nd camp and Syrian nationalism $\Rightarrow \Rightarrow \Rightarrow$ Qaumiya identity is connected with the actors for the BoP.

